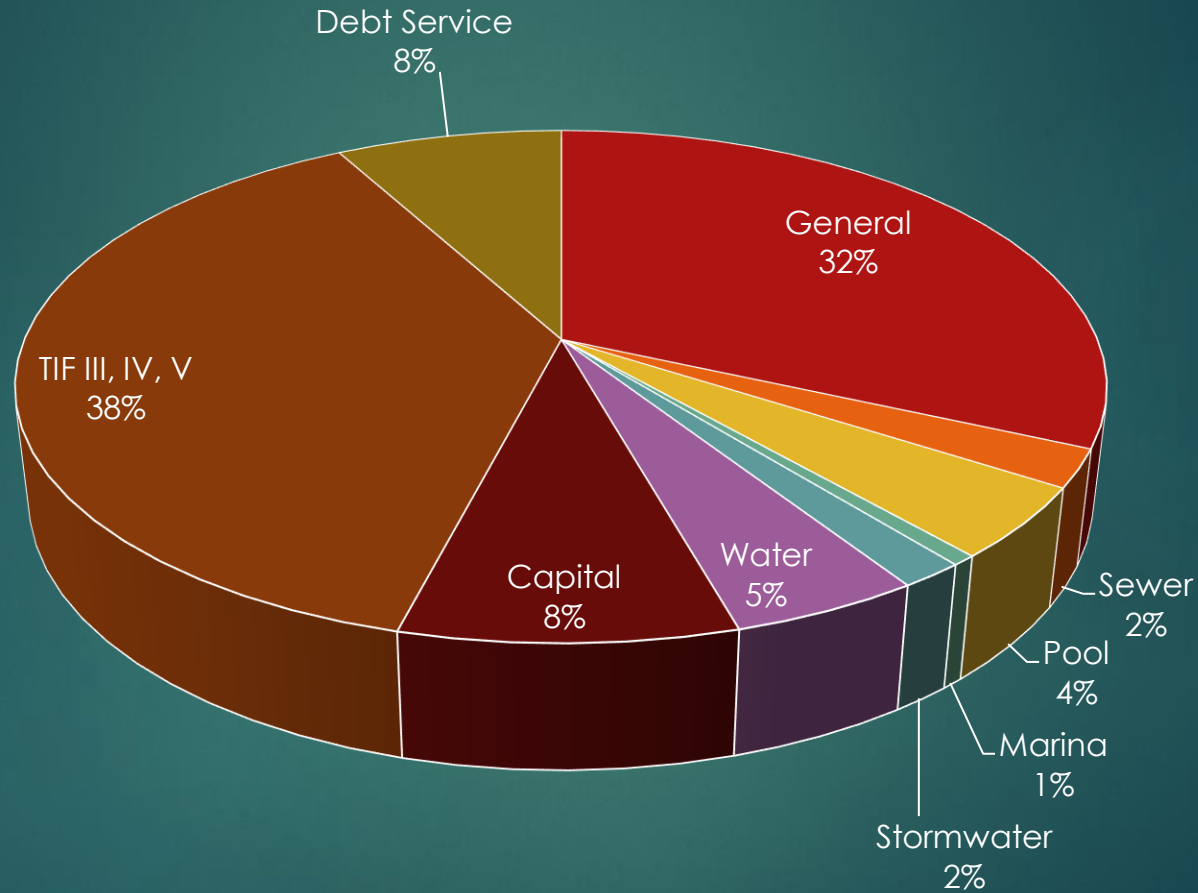


Village of Shorewood Hills 2022 Finances and Budgets



Village Fund Expenses

Village Fund Expenses



Water Utility

- ▶ **Revenues: \$616,800 - Sales and Public Fire Protection.**
- ▶ **Expenses: \$616,800 - Labor, purchased water and debt.**
- ▶ **Any surplus generated transferred to capital fund to pay back \$247,810 advance. \$71,529 in 2021 \$79,704 in 2022**
- ▶ **Stable outlook. Real time monitoring.**

Sanitary Sewer Utility

- ▶ Revenues: \$370,000 - User fees.
- ▶ Expenses: \$307,754 - Treatment to MMSD, Debt Service.
- ▶ Advance repayment completed. Stable Outlook.
- ▶ Surpluses could be used to assist with capital projects such as replacement of line from lift station in McKenna Park

Stormwater Utility



- ▶ Revenues: \$209,258 - User fees
- ▶ Expenses: \$211,501
- ▶ Consulting expenses are higher in 2022 to update our stormwater modeling. This will qualify the Village to apply for a matching to replace our street sweeper with a vacuum type
- ▶ Stable Outlook.

Shorewood Hills Pool

- ▶ **2021 Revenues: \$650,525**
- ▶ **2021 Expenses: \$500,000**

Estimates

Waterfront Fund



- ▶ Revenues: \$81,428 - User Fees adjusted 10%
- ▶ Expenses: \$81,015 - \$22,000 Capital Improvements

Capital Fund 2022

- ▶ **\$500,000 University Avenue**
- ▶ **\$90,000 Highbury, Hunter Hill paving match grant**
- ▶ **\$138,000 Backhoe, line painter**
- ▶ **\$212,876 Heiden Haus**
- ▶ **\$25,000 Bridge Replacement Engineering**
- ▶ **\$65,000 DPW Truck**
- ▶ **\$12,800 Police radios, equipment**
- ▶ **\$129,000 Transfer of Unrestricted Funds to General Fund**
- ▶ **\$26,250 repave pool lot (1/4 cost)**
- ▶ **\$17,000 Village Hall renovations repairs**
- ▶ **\$1,213,926 Total**

Capital Fund 2023

- ▶ Foresters Dump Truck: \$53,500
 - ▶ Leak Picker: \$45,000
 - ▶ Bridge Reconstruction: \$250,000 - \$440,000
 - ▶ Sewer, Water, Stormwater
path under bridge: \$250,000 - \$500,000
- Total: \$598,500 - \$1,038,500

2022- 2023 Financing needs \$1.5 - \$2.2M

Capital Fund Balance

▶ 2021 balance :	\$850,534*
▶ 2021 expenses:	\$624,975
▶ 2022 balance:	\$225,959
▶ 2022 expenses:	\$1,213,926
▶ 2022 year end balance:	(\$960,967)
▶ 2023 expenses	\$1,038,500
▶ 2023 year end balance	(\$1,999,467)

* Includes non spendable advances

Tax Increment Districts

▶ TIF III Increment - \$1,000,000 per year

- Debt - \$700,000 per year
- Municipal Revenue Obligations (MRO) - \$250,000 annually
- Closure extended three years to generate sufficient increment to pay for \$5.5M University Avenue project in 2022 – 2023
- Possible \$6,000,000 development in 2022 with provision if sufficient increment is available to buy down more affordable housing

Tax Increment Districts III and IV



- **TIF IV Increment - \$290,000 per year**
 - Debt - \$117,000 per year
 - MRO - \$91,000 annually
- **TIF V Increment - \$165,000 per year**
 - MRO - Average \$145,814 annually

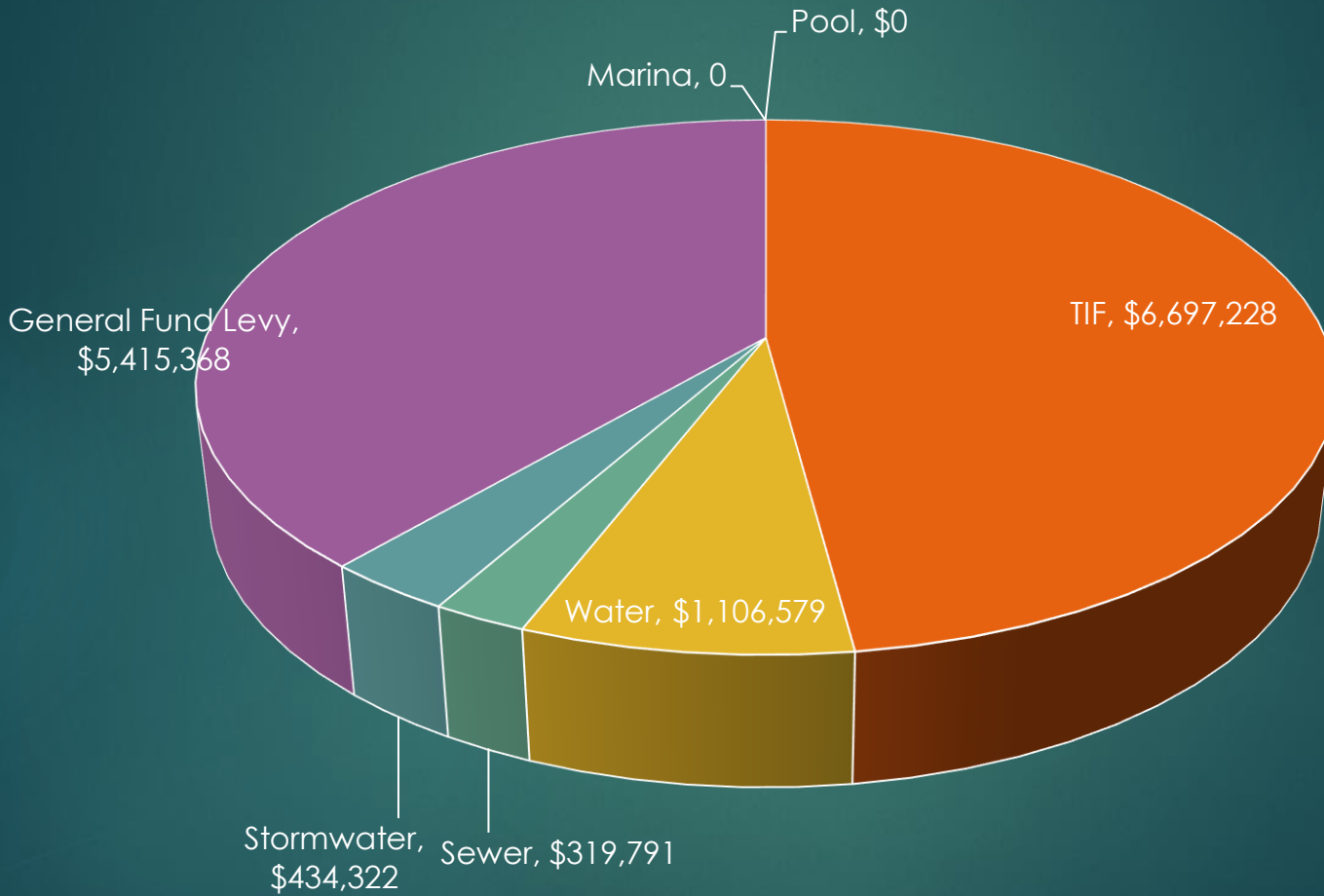
Two New Funds

- ▶ Donations Fund
- ▶ ARPA Fund

Debt Service Total

Pool	\$0
TIF	\$6,697,228
Water	\$1,106,579
Sewer	\$319,791
Stormwater	\$434,322
General Fund Levy	\$5,415,368
Marina	\$0
<hr/> Total Debt Service	<hr/> \$13,973,288

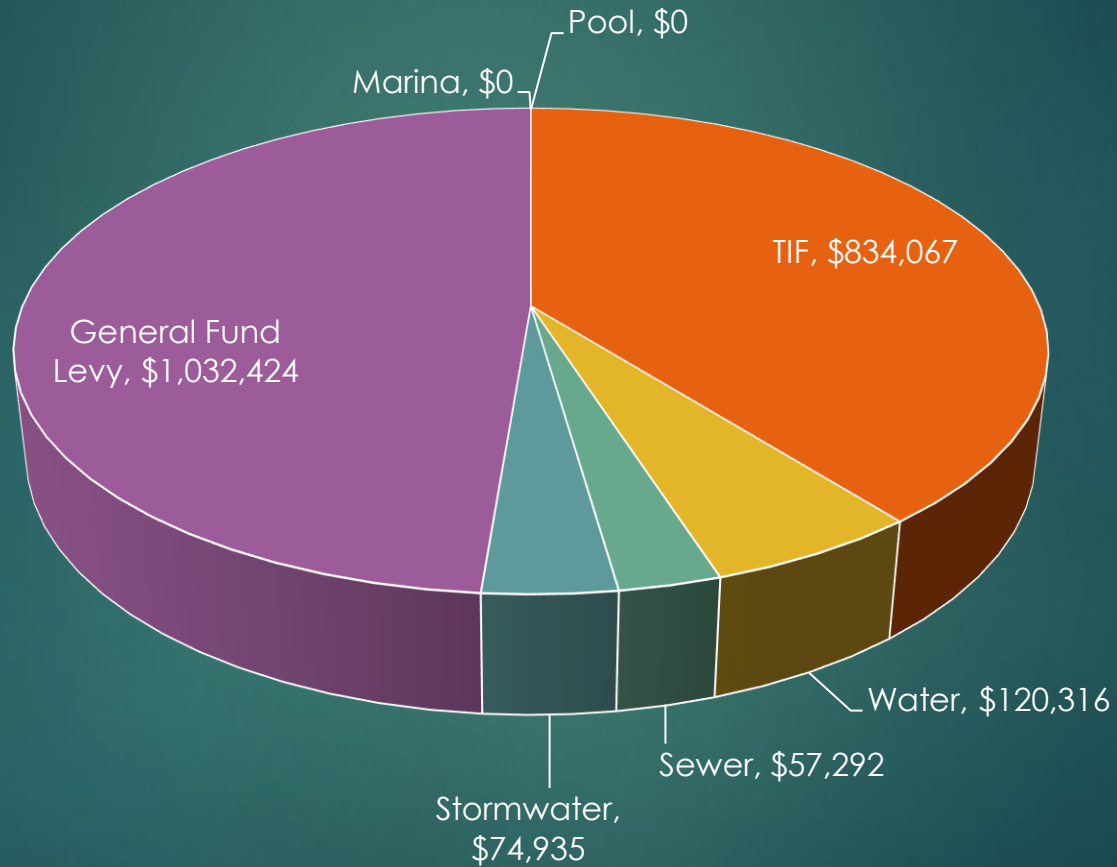
Debt Service Total



2022 Debt Service

General Levy	\$1,032,424
Water	\$120,316
Sewer	\$57,292
Stormwater	\$74,935
Marina	\$0
Pool	\$0
TID	\$834,067
<hr/>	
Total	\$2,119,034

2022 Debt Service



Debt Service Outlook



The Village has the capacity to incur between \$1,500,000 - \$2,000,000 in additional debt presently.

Debt Service Outlook

WATER PORTION

<i>Calendar Year</i>	PRINCIPAL	INTEREST	TOTAL
2020	\$85,262	\$32,111	\$117,373
2021	\$83,796	\$30,379	\$114,175
2022	\$91,728	\$28,588	\$120,316
2023	\$104,058	\$26,308	\$130,366
2024	\$109,921	\$23,343	\$133,264
2025	\$76,649	\$20,532	\$97,181
2026	\$78,115	\$18,136	\$96,251
2027	\$84,581	\$15,559	\$100,140
2028	\$81,047	\$12,873	\$93,920
2029	\$132,513	\$9,354	\$141,867
2030	\$43,979	\$6,274	\$50,253
2031	\$43,979	\$4,515	\$48,494
2032	\$45,445	\$2,727	\$48,172
2033	\$45,445	\$909	\$46,354
Callable Maturities	\$1,106,518	\$231,609	\$1,338,127

Debt Service Outlook

SEWER PORTION

<i>Calendar Year</i>	PRINCIPAL	INTEREST	TOTAL
2020	\$50,000	\$9,487	\$59,487
2021	\$55,000	\$8,379	\$63,379
2022	\$50,000	\$7,292	\$57,292
2023	\$60,000	\$6,023	\$66,023
2024	\$60,000	\$4,423	\$64,423
2025	\$37,917	\$3,061	\$40,978
2026	\$15,000	\$2,325	\$17,325
2027	\$15,000	\$1,875	\$16,875
2028	\$20,000	\$1,350	\$21,350
2029	\$35,000	\$525	\$35,525
2030	\$0	\$0	\$0
2031			
2032			
2033			
Callable Maturities	\$397,917	\$44,740	\$442,657

Debt Service Outlook

STORM WATER PORTION

<i>Calendar Year</i>	PRINCIPAL	INTEREST	TOTAL
2020	\$65,000	\$12,537	\$77,537
2021	\$65,000	\$11,235	\$76,235
2022	\$65,000	\$9,935	\$74,935
2023	\$70,000	\$8,410	\$78,410
2024	\$75,000	\$6,453	\$81,453
2025	\$35,000	\$4,880	\$39,880
2026	\$35,000	\$3,895	\$38,895
2027	\$35,000	\$2,900	\$37,900
2028	\$25,000	\$2,025	\$27,025
2029	\$55,000	\$825	\$55,825
2030	\$0	\$0	\$0
2031			
2032			
2033			
Callable Maturities	\$525,000	\$63,094	\$588,094

Debt Service Outlook

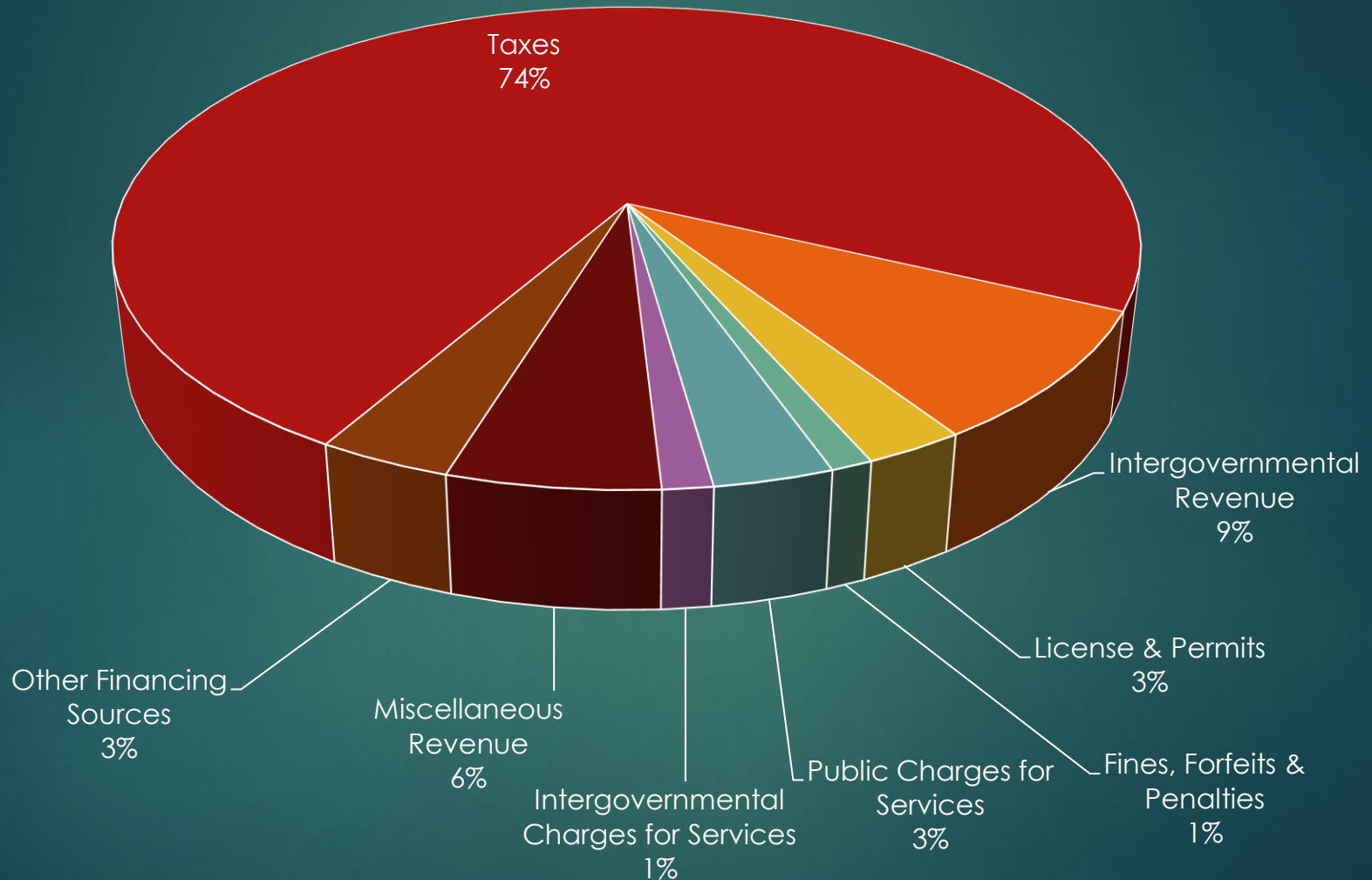
GENERAL FUND LEVY PORTION

<i>Calendar Year</i>	PRINCIPAL	INTEREST	TOTAL
2020	\$915,196	\$165,366	\$1,080,562
2021	\$966,662	\$147,724	\$1,114,386
2022	\$903,730	\$128,694	\$1,032,424
2023	\$926,402	\$107,007	\$1,033,409
2024	\$965,079	\$80,922	\$1,046,001
2025	\$640,545	\$58,155	\$698,700
2026	\$331,885	\$44,249	\$376,134
2027	\$340,419	\$34,191	\$374,610
2028	\$163,953	\$26,302	\$190,255
2029	\$177,487	\$20,421	\$197,908
2030	\$106,021	\$15,126	\$121,147
2031	\$106,021	\$10,885	\$116,906
2032	\$109,555	\$6,573	\$116,128
2033	\$109,555	\$2,191	\$111,746
Callable Maturities	\$6,762,510	\$847,806	\$7,610,316

General Fund Revenues

Taxes (maximum allowable levy) +debt	\$3,017,256
Intergovernmental Revenue	\$358,314
License & Permits	\$109,820
Fines, Forfeits & Penalties	\$46,000
Public Charges for Services	\$131,010
Intergovernmental Charges for Services	\$54,986
Miscellaneous Revenue	\$231,600
Other Financing Sources	\$146,289
<hr/>	
TOTAL	\$4,095,275

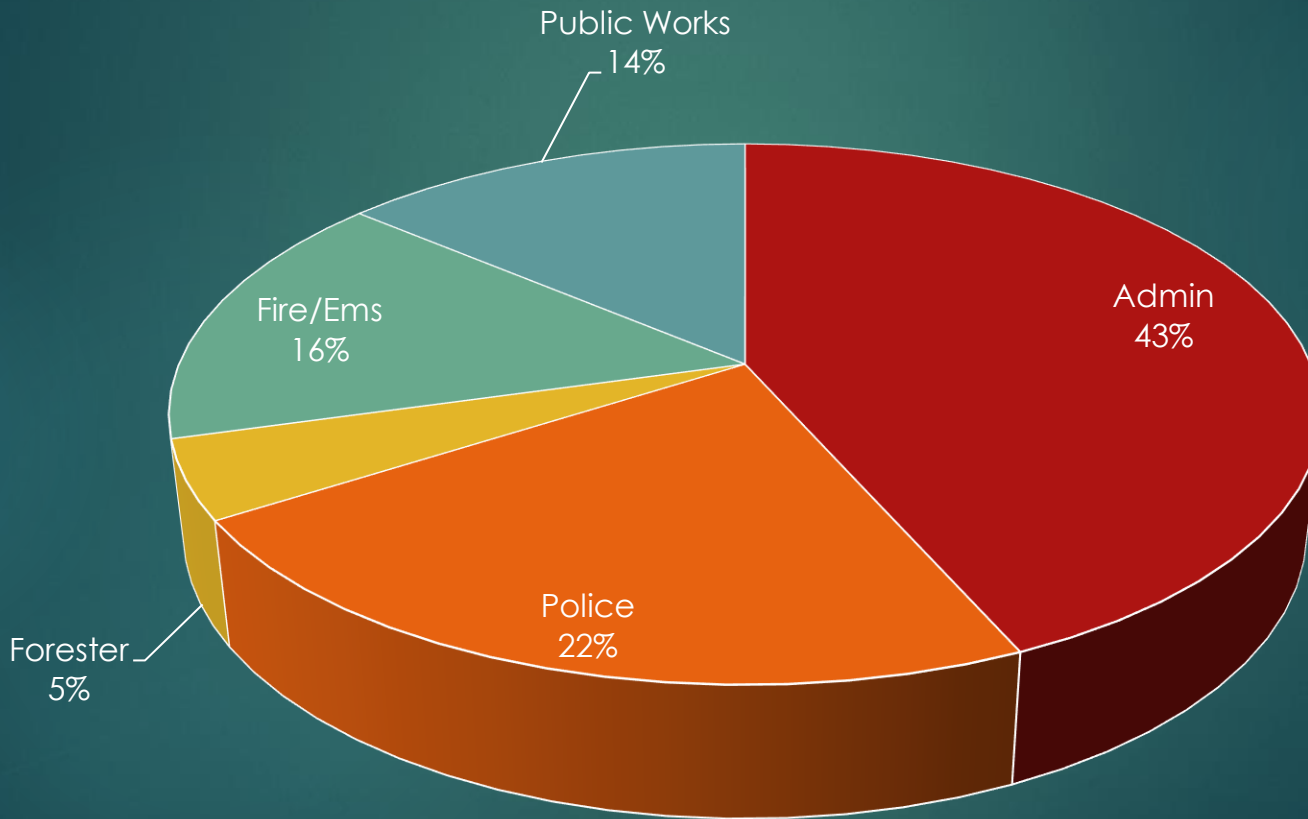
General Fund Revenues



Expenses by Department

Admin/Gen Gov/Debt	\$1,777,183
Police	\$922,710
Forester	\$192,369
Fire/EMS	\$636,872
Public Works	\$566,141

Expenses by Department



General Fund Highlights

- ▶ 2022 budget decrease of \$48,296 due to decrease in debt service
- ▶ 2% COLA increase plus step (2.5%)
- ▶ Negligible health insurance increase (\$9.00 per mo)
- ▶ Levy decrease of \$62,520
- ▶ Budget gap of up to \$129,289 will need to be filled through use of ARPA funds, and/or through fund transfers

Administration General Government

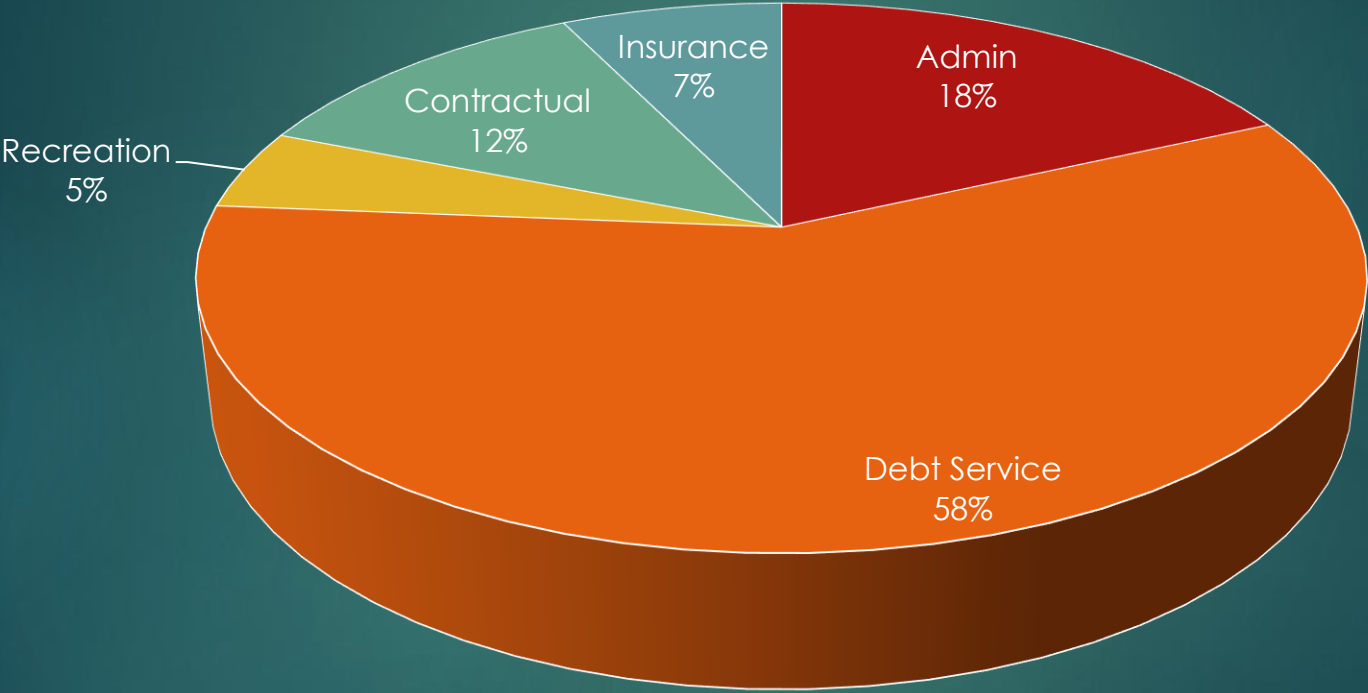
2021 Total Expenses: \$1,713,761

2022 Total Expenses: \$1,777,183

- ▶ **Admin: \$323,553**
- ▶ **Debt Service: \$1,032,424**
- ▶ **Recreation: \$83,700**
- ▶ **Contractual: \$208,006**
- ▶ **Insurance: \$129,500**

Administration/Clerk Budget-Expenses

4.5 Full-time Staff



Police Department

2021 Total Expenses: \$887,772

2022 Total Expenses: \$922,710

8.5 Full-time Staff

- ▶ **Police Chief**
- ▶ **Police Lieutenant**
- ▶ **Police Sargent**
- ▶ **Four Police Officers**
- ▶ **1.5 Non-sworn Staff**

Fire/EMS

2021 Total Expenses: \$583,985

2022 Total Expenses: \$606,872

- ▶ **MFD Fee for Service \$22,887 more than 2021**
- ▶ **Based on equalized value, population change formula including Madison Fire/EMS budget and debt service. Town of Madison added in.**

Public Works

2021 Total Expenses: \$509,868

2022 Total Expenses: \$566,141

5 Full-time Staff plus seasonals



Forestry

2021 Total Expenses: \$186,511

2022 Total Expenses: \$192,369

1.5 Full-time Staff plus seasonals



Levy/Taxes

- ▶ Village only levy \$2,955,256 - \$62,250 decrease

Impact on Property Taxes

- ▶ The Village-only tax levy down -1.52% will decrease taxes on a \$600,000 valued home by (\$51.45)
- ▶ School District up 9% or \$547.17
- ▶ Madison College down -4.8 % (\$27.58)
- ▶ County levy not in yet

General Fund Outlook

- ▶ Levy limits and limited growth make it difficult to absorb expense increases maintain or increase service levels.
- ▶ Annually need to find ways to close \$100,000 - \$150,000 budget gaps to maintain service levels and rely on revenue sources that are not dependable or sustainable
- ▶ Possible Alternatives
 - ▶ Levy increase referendum
 - ▶ Transfer eligible expenses to fees for service through new or existing utilities

Historical Fund Balance

- ▶ 2003 \$93,849 (4%)
- ▶ 2006 \$586,519
- ▶ 2009 \$731,447
- ▶ 2012 \$685,854
- ▶ 2015 \$779,283
- ▶ 2018 \$751,271
- ▶ 2019 \$956,371
- ▶ 2020 \$896,998
- ▶ 2021 \$928,378 (23%)

Fund Balance - General Fund

Unassigned: \$956,371 end of 2019 24%

\$896,998 end of 2020 21%

\$928,378 end of 2021 23%

Policy to maintain balance between 15-25% of subsequent years expenses.

Assumes no advances to other funds.

Thank You

Questions?

